

Plastifloor® 500 „style“ (GB)

Methacrylate resin + powder component for producing Plastifloor® 500 „style“ surfaces

Product: Plastifloor® 500 „style“ floorings are applied as a premium topcoat for smooth surfaces of high optical quality. The self-leveling coating is produced by mixing liquid component Plastifloor® 500 with dry mixture 500 “style” and adding hardener powder 500 directly on site. Apply evenly with a notched trowel. Plastifloor® 500 „style“ is applicable as an SL-coating on primed surfaces and, where required, on grounds leveled with an interlayer. After curing, the topcoat can be dry-ground with 100s sand paper, which results in a smooth surface. Transparent sealing is processed with Plastifloor® 500 resin while adding Plastifloor® hardener/M.

Data:

Delivery form	liquid, slightly bluish
Flow time	26- 32 (20°C DIN cup 4mm)
Density at 20°C	DIN 53217 1.00 g/cm ³
Flash point	DIN 51755 +10 °C
Curing time	20-30 minutes (20°C and 1% hardener)
Shelf life	dark at < 20 °C 6 months maximum

Activator: Plastifloor® 500 is pre-activated for temperatures of + 5 °C to + 30 °C.

Initiator/Hardener: Plastifloor® 500 Hardener, temperature-sensitive
Plastifloor® Hardener/M, temperature-sensitive

VbF: A I

GISCODE: RMA 10

packaging and shipment: resin: steel drum 180 kg, net 25 kg pail, 10 kg pail
powder: 15 kg paper bag
hardener: 25 kg, 5 kg and 1 kg box

Plastifloor® 500 „style“ (GB)

Methacrylate resin + powder component for producing Plastifloor® 500 „style“ surfaces

properties:

As a high quality topcoat on even surfaces such as shops, entrance areas, exhibition halls with high requirements to outstanding visual effects. The coating is distinguished by the following characteristics:

- Good leveling qualities
- Low tendency to yellowing
- Enhanced scratch resistance
- Low staining

Processing:

Briefly stir up Plastifloor® 500 resin and pour into a mixing pail. Add Plastifloor® 500 hardener and mix for minimum 30 sec. Then add Plastifloor® 500 „style“ / powder component and thoroughly mix for at least 1 minute. Pour coating compound onto the primed and, if required, interlayered underground. Distribute with a notched trowel. Application of a layer thickness between 2-3 mm. After curing, the topcoat can be dry-ground with a rotary disc sander (sandpaper 100s granulation) Sealing is processed with Plastifloor® 500 resin, colourless while adding preferably Plastifloor® hardener/M in order to obtain an even and scratch-resistant surface.

mix ratio

coating(topcoat):

10 l Plastifloor® 500 resin
15 kg Plastifloor® 500 „style“ powder
0.2l Plastifloor® 500 hardener (at approx. 20°C)

mix ratio

Sealing:

8 l Plastifloor® 500 resin
0.24l Plastifloor® hardener M (at approx. 20°C)

consumption:

ca. 1,5 kg/m² coating compound/mm layer thickness.
ca. 0,3 kg/m² sealing

Plastifloor® 500 „style“ (GB)

Methacrylate resin + powder component for producing Plastifloor® 500 „style“ surfaces

Pot- and curing time depending on the temperature:

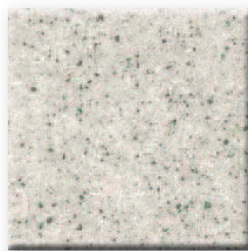
Temperature [°C] **)	Hardener [% by vol.] *	Pot life [min.]	Hardness-time [min.]
+ 5 to + 10	6.0	25-30	45-60
+ 10 to + 20	4.0	15-20	35-40
+ 20 to + 25	3.0	12-15	20-30
+ 25 to + 30	2.5	8-12	15-20

*) Hardener quantity according to quantity of Plastifloor® 500 N (hardener 50W)

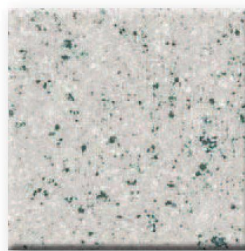
***) The temperature specifications refer to resin -, soil and air temperature.

Colours:

Plastifloor® 500 style powder is available in the following colors:



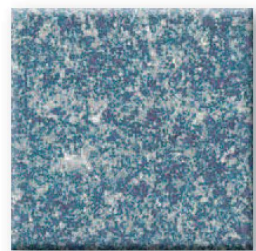
classic 990



hierro 1305



contrast 940



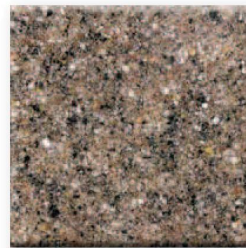
light blue 501



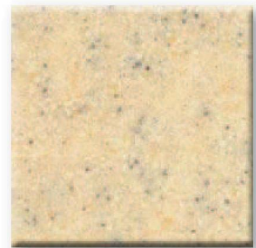
north sea 520



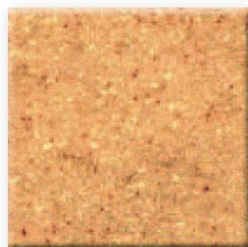
desert 860



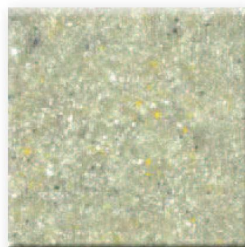
cinnamon 883



beach sand 103



peach 350



apple green 600

Plastifloor® 500 „style“ (GB)
Methacrylate resin + powder component for
producing Plastifloor® 500 „style“ surfaces

-
- storage:** Methacrylate resins are subject to the handling regulations of highly flammable materials. Plastifloor® resins have to be stored cool, if possible at temperatures between 15 – 20° C. Keep away from direct sun. During storage paraffin particles can deposit. Material has to be stirred up well before use. Please note the advice of our safety datasheet.
- Advice:** Plastifloor® 500 style is applicable as a topcoat in both interior and exterior zones (pay attention to slip resistance categories!). Good ventilation during the application ensures good curing. Due to the thermoplastic properties of MMA resins, black strips may occur under strain of forklifts (skid marks). This effect may be reduced by processing the sealing with Hardener/M. Please also note the cleaning and maintenance instructions for Plastifloor® grounds.

data concerning our products and devices as well as concerning our data and procedures are based on an extensive research work and an application technology experience. We obtain these results, with which we do not take over adhesion going beyond the respective single contract, in word and writing after best knowledge, reserve ourselves we however technical changes in the course of the product development. Beyond that our application technology service stands when desired for large consultation as well as for co-operation with the solution manufacturing and application technology problems for order. That does not relieve the user however to examine our data and recommendations before their use responsible for the own use. That applies - particularly for deliveries to foreign markets - also regarding the keeping of patent rights third as well as for applications and procedures, which are not expressly in writing indicated by us. The case of loss our adhesion is limited to indemnifications of same extent, as they plan our general terms of delivery and sales with lack of quality.