

Plastipur® HT 427

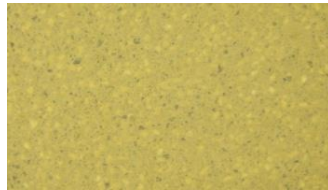
Plastipur® HT 427 is a range of heavy-duty, anti-slip polyurethane floor screeds (HT120W, HT62W and HTAS).

The range includes various anti-slip profiles with a textured matt finish.

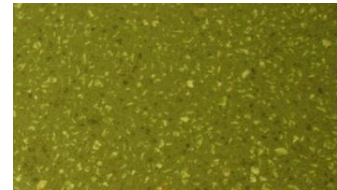
Usually laid to a thickness between ¼" to ½".



Buff



Cream



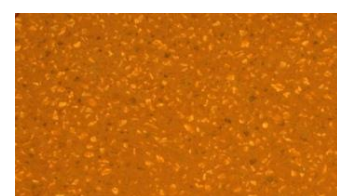
Green



Grey



Red



Terracotta

Plastipur® MT & MTF

Plastipur® MT is a self-smoothing polyurethane resin screed with a smooth matt finish.

A flexible version, **Plastipur® MTF**, has a semi-gloss finish and is available with smooth or anti-slip surface profiles: Suitable for timber, steel decking and other flexing substrates.

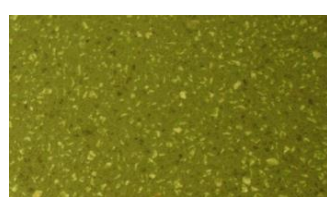
Usually laid to a thickness between 1/16" to 3/16".



Buff



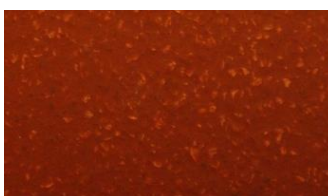
Cream



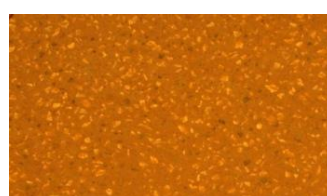
Green



Grey



Red



Terracotta

Data concerning our products and devices as well as concerning our data and procedures are based on an extensive research work and an application technology experience. We obtain these results, with which we do not take over adhesion going beyond the respective single contract, in word and writing after best knowledge, reserve ourselves we however technical changes in the course of the product development. That does not relieve the user however to examine our data and recommendations before their use responsible for the own use. That applies also regarding the keeping of patent rights third as well as for applications and procedures, which are not expressly in writing indicated by us.